

INSTALLATION NOTE

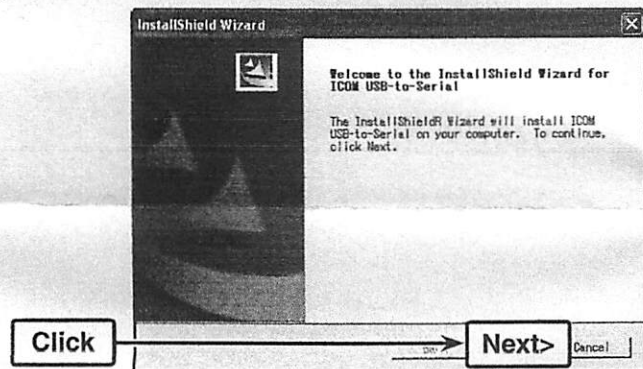
- After the USB driver installation has been completed (Step 1), connect the cloning cable to the PC (Step 2).
- The displayed dialog boxes, indications or operations may differ slightly from the following instructions, depending on your system settings, type of OS and its service pack level.

- These Instructions are based on using Windows XP. However, the instructions are similar to another operating systems, such as Windows 98SE, Me and 2000.
- Please refer to the installation guide on the CD for installing Windows Vista or Windows 7.
To read the installation guide, Adobe® Reader® is required. If you have not installed the reader, please download it from Adobe Systems Incorporated's website.

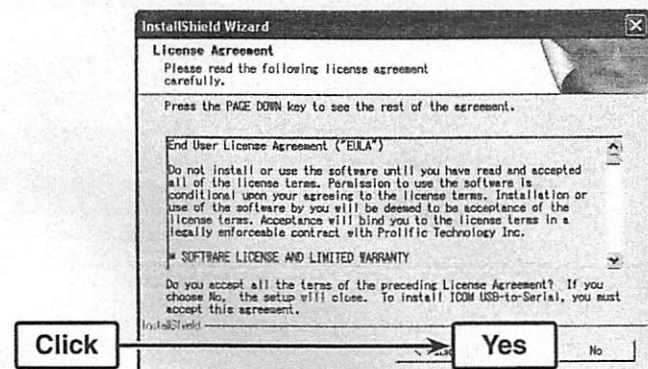
1 USB driver installation (Step 1)

When installing on other than a Windows 98SE or Me PC, log on as the **administrator**.

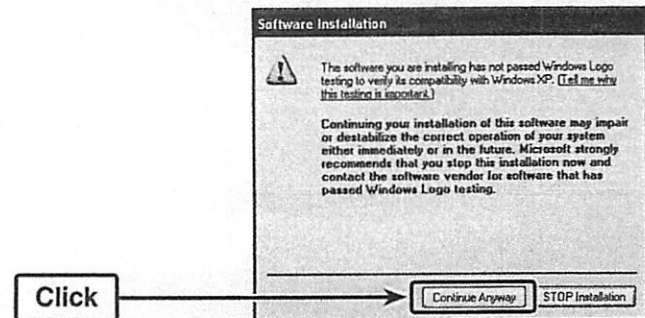
- 1 Make sure Windows has completed its start-up, and no other applications are running.
- 2 Insert the supplied CD into the CD drive.
- 3 Double click "ICOM USB Driver\Installer.exe" contained in the 'XP_2K_98SE_ME' folder on the CD icon.
- 4 "Welcome to the InstallShield Wizard for Icom USB-to-Serial" appears.
Click [Next >].



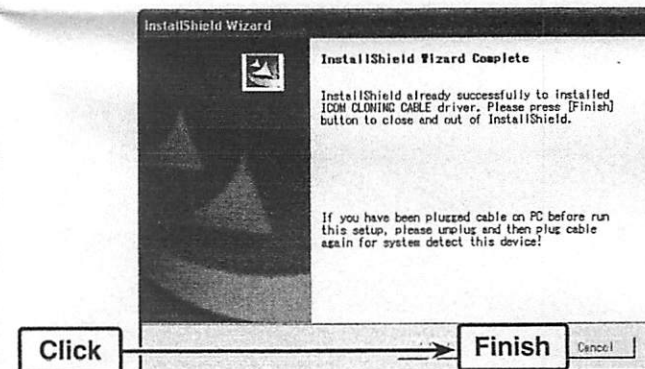
- 5 "License Agreement" appears.
Read all of the license agreement, and then click [Yes] to continue, if you agree.



- 6 "Software Installation" appears.
Click "Continue Anyway" to start the USB driver installation.



- 7 After the installation has completed, "InstallShield Wizard Complete" appears.
Click [Finish].



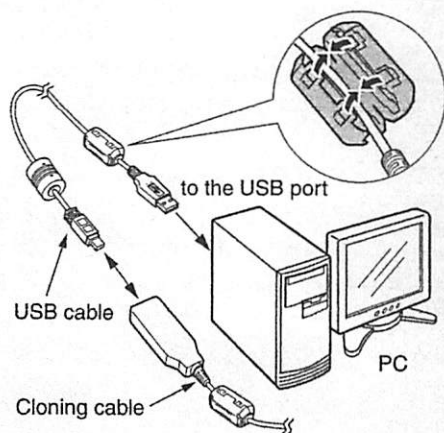
- 8 Restart the PC.

Icom, Icom Inc. and the Icom logo are registered trademarks of Icom Incorporated (Japan) in Japan, the United States, the United Kingdom, Germany, France, Spain, Russia and/or other countries. Adobe and Reader are registered trademarks of Adobe Systems Incorporated in the United States and/or other countries. Microsoft, Windows and Windows Vista are registered trademarks of Microsoft Corporation in the United States and/or other countries. All other products or brands are registered trademarks or trademarks of their respective holders.

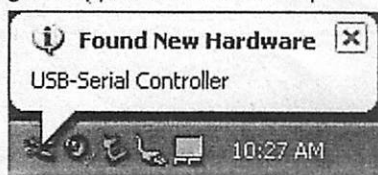
2 Cable connection (Step 2)

After completing Step 1, connect the cloning cable to the PC to complete the installation.

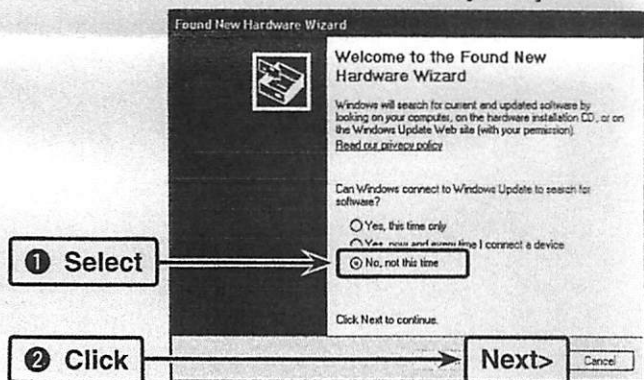
- 1 Connect the cloning cable to the USB cable, and then the USB cable to the PC's USB port, as illustrated below.
 - Attach the Ferrite EMI filter to the PC side of the USB cable.



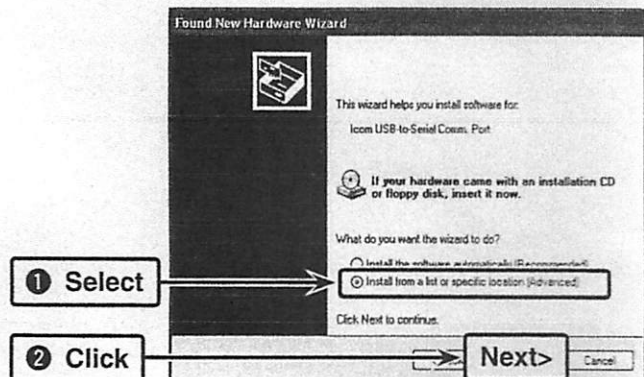
- 2 This dialog box appears on the desktop.



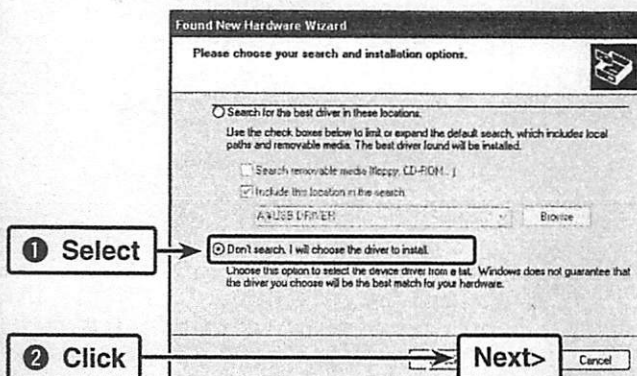
- 3 "Welcome to the Found New Hardware Wizard" appears. Select "No, not this time," and then click [Next>].



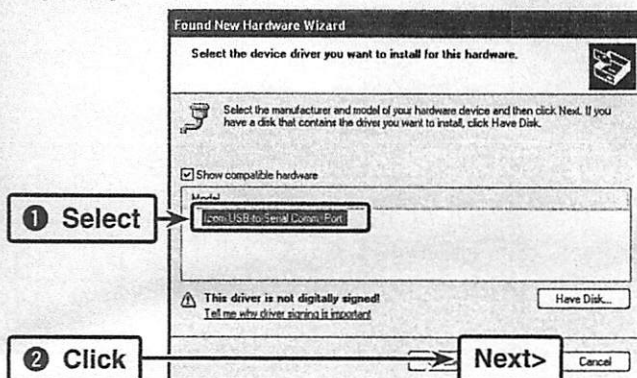
- 4 Select "Install from a list or specific location (Advanced)," and then click [Next>].



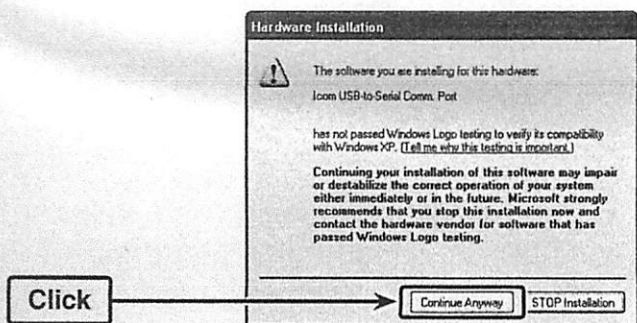
- 5 Select "Don't search. I will choose the driver to install," and then click [Next>].



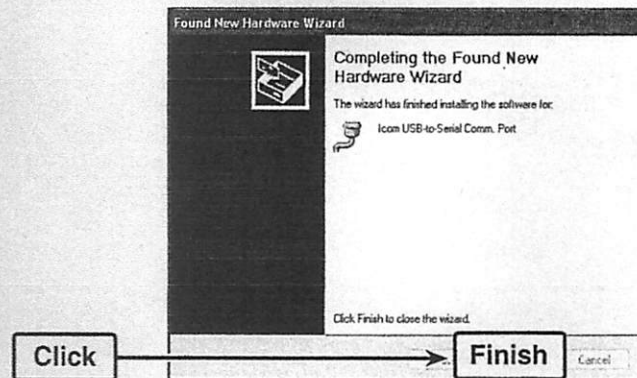
- 6 Select "Icom USB-to-Serial Comm. Port," and then click [Next>].



- 7 "Hardware Installation" appears. Click "Continue Anyway."



- 8 After the installation has completed, "Completing the Found New Hardware Wizard" appears. Click [Finish].



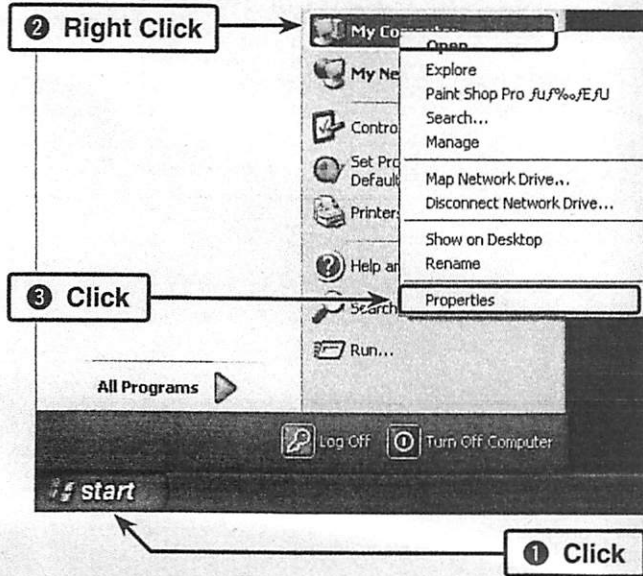
- 9 Restart the PC.

3 COM port confirmation (Step 3)

After the driver installation has completed, confirm the driver availability and the port number.
The COM port number is used to set communication with the cloning software.

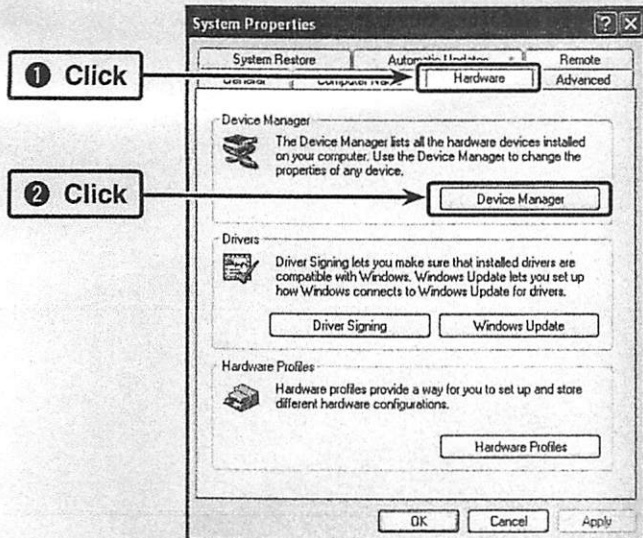
- 1 Click the Windows "start" button.
- 2 Right click [My Computer] in the <start> menu, and then click [Properties], as shown below.

• "System Properties" appears.



- 3 Click the [Hardware] tab, and then click [Device Manager].

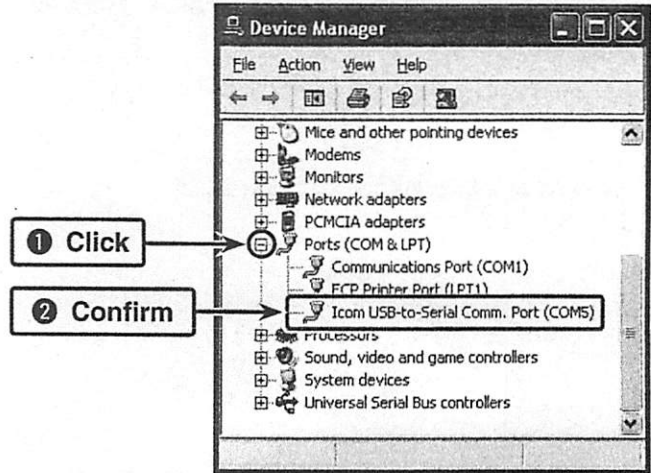
• "Device Manager" appears.



- 4 Click the "+" next to "Ports (COM&LPT)."

Confirm "Icom USB-to-Serial Comm. Port (COM*)" is displayed.

• In this example, the COM port number is "5."



• If the COM port number is not displayed, or several numbers are displayed at the same time like "Icom USB-to-Serial Comm. Port (COM*)(COM*)", the driver may not be installed properly. In such case, uninstall the USB driver and install it again.

• You can uninstall the program using the "Add or Remove Programs" in the Windows Control Panel.